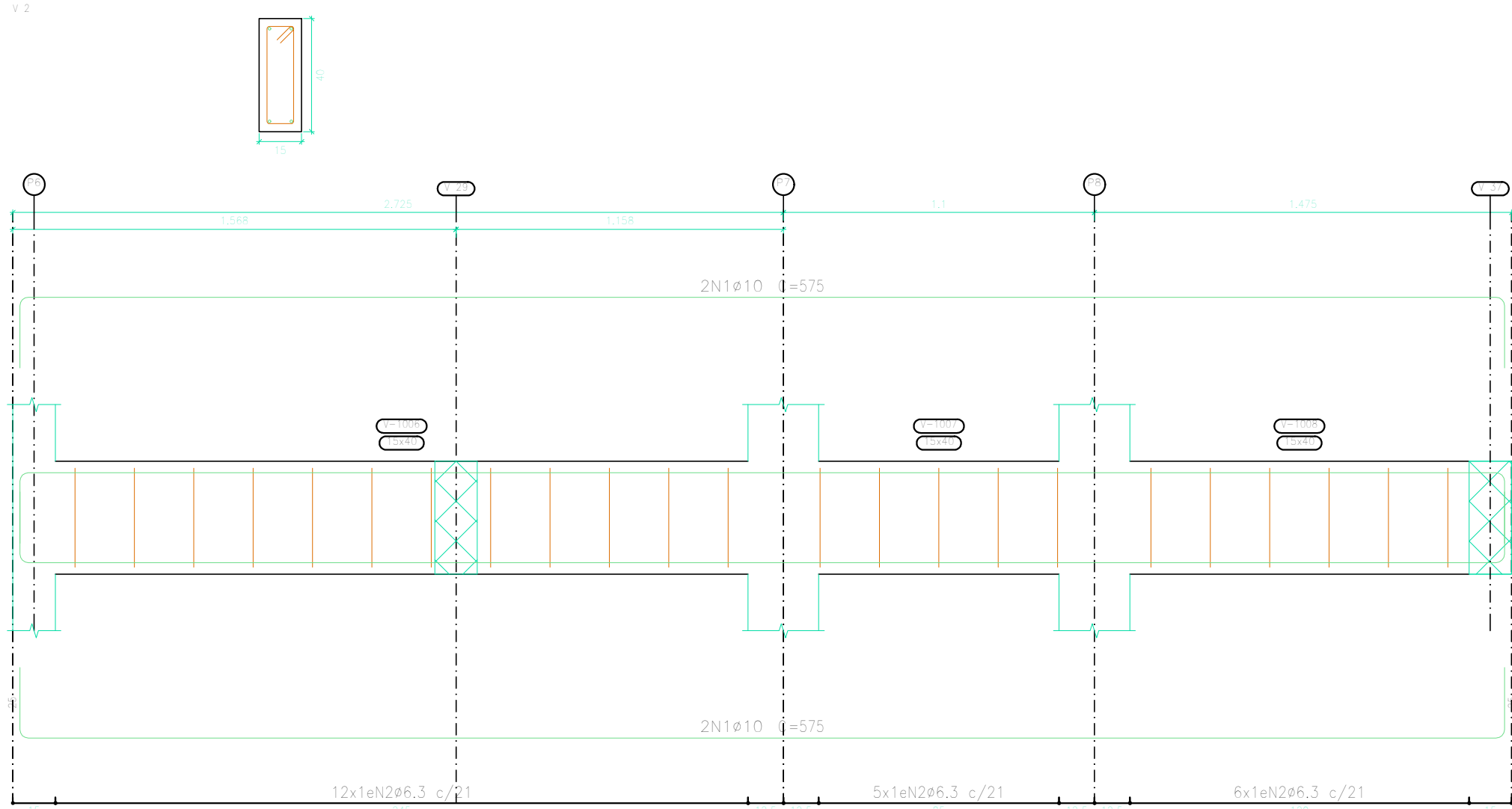
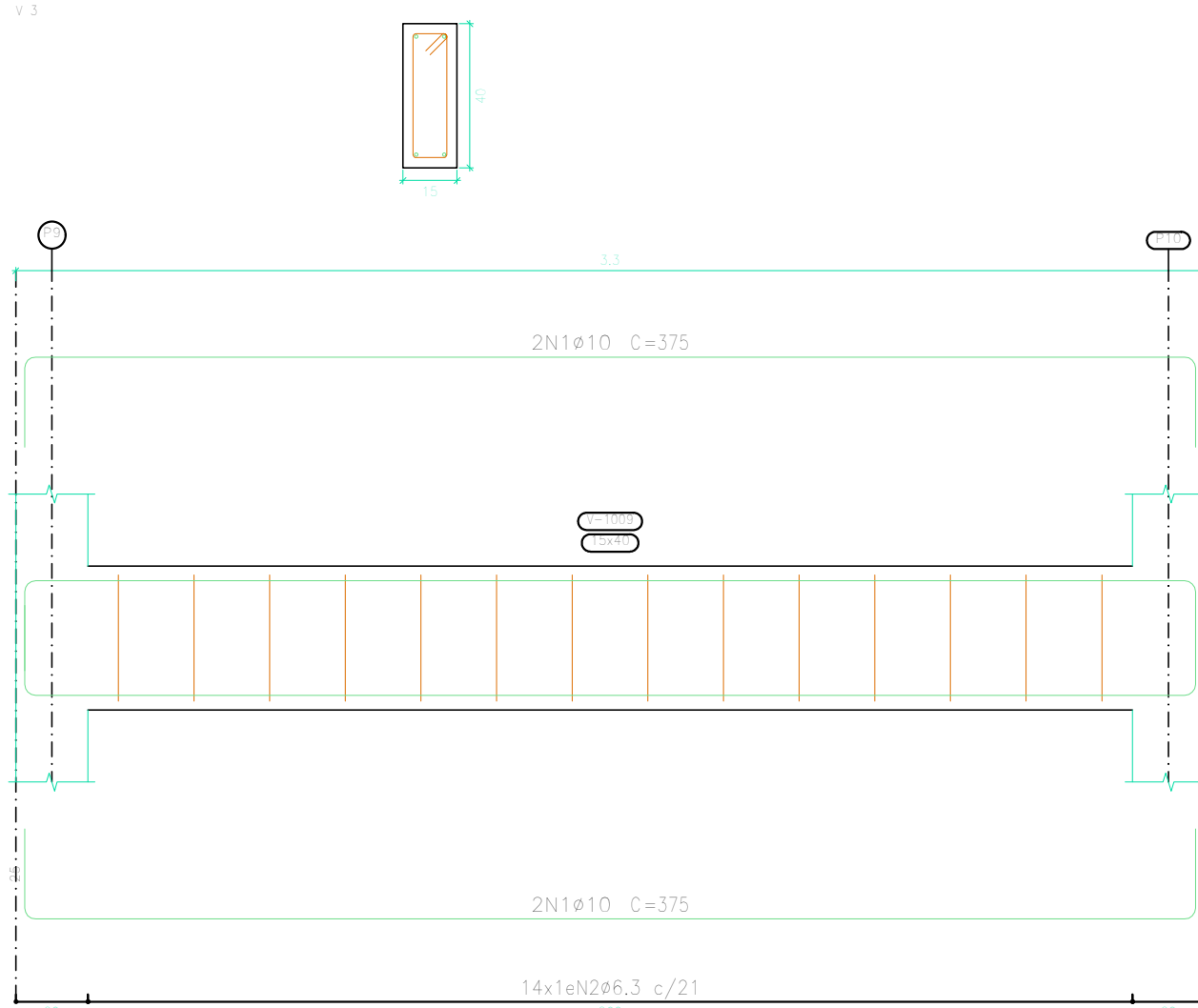


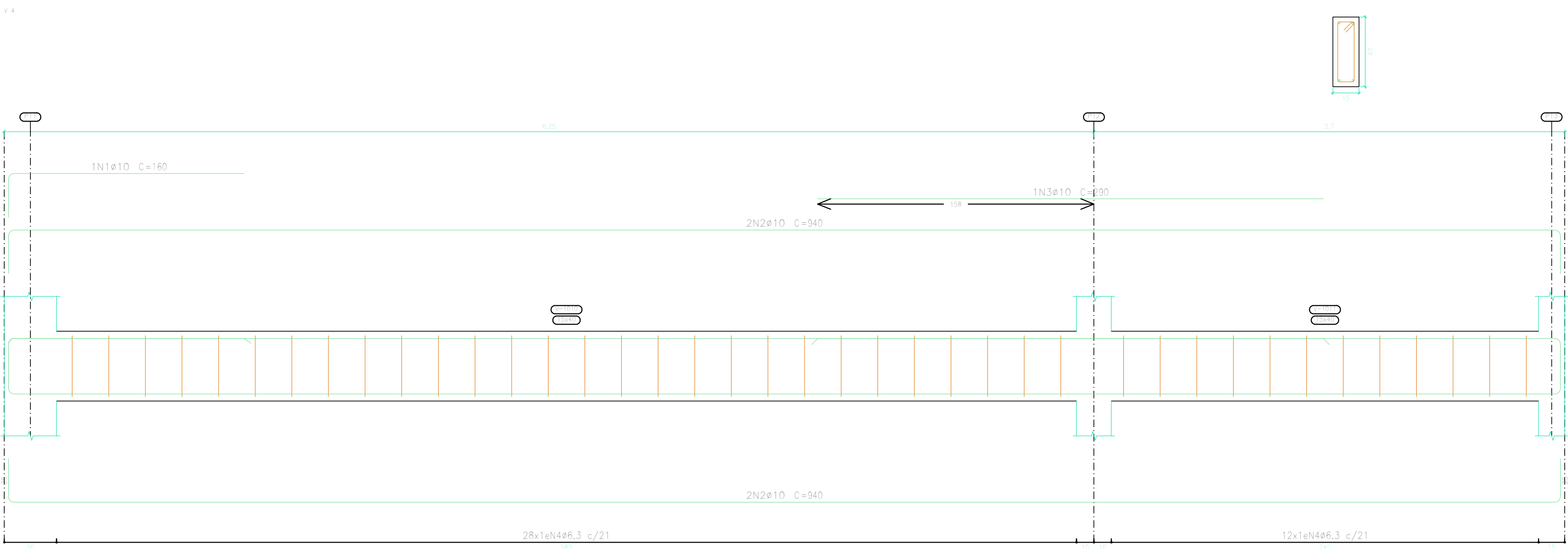
Elemento	Pos.	Diam.	Q.	Esquema (cm)	Comp. (cm)	Totol (cm)	CA-50 (kg)	CA-60 (kg)
V.1	1	ø10	4		850	3540	21.0	
	2	ø6.3	37		100	3700	0.1	
					Totol	31.0		
					ø6.3:	0.1	0.0	
					ø10:	21.0	0.0	
					Totol:	31.0	0.0	



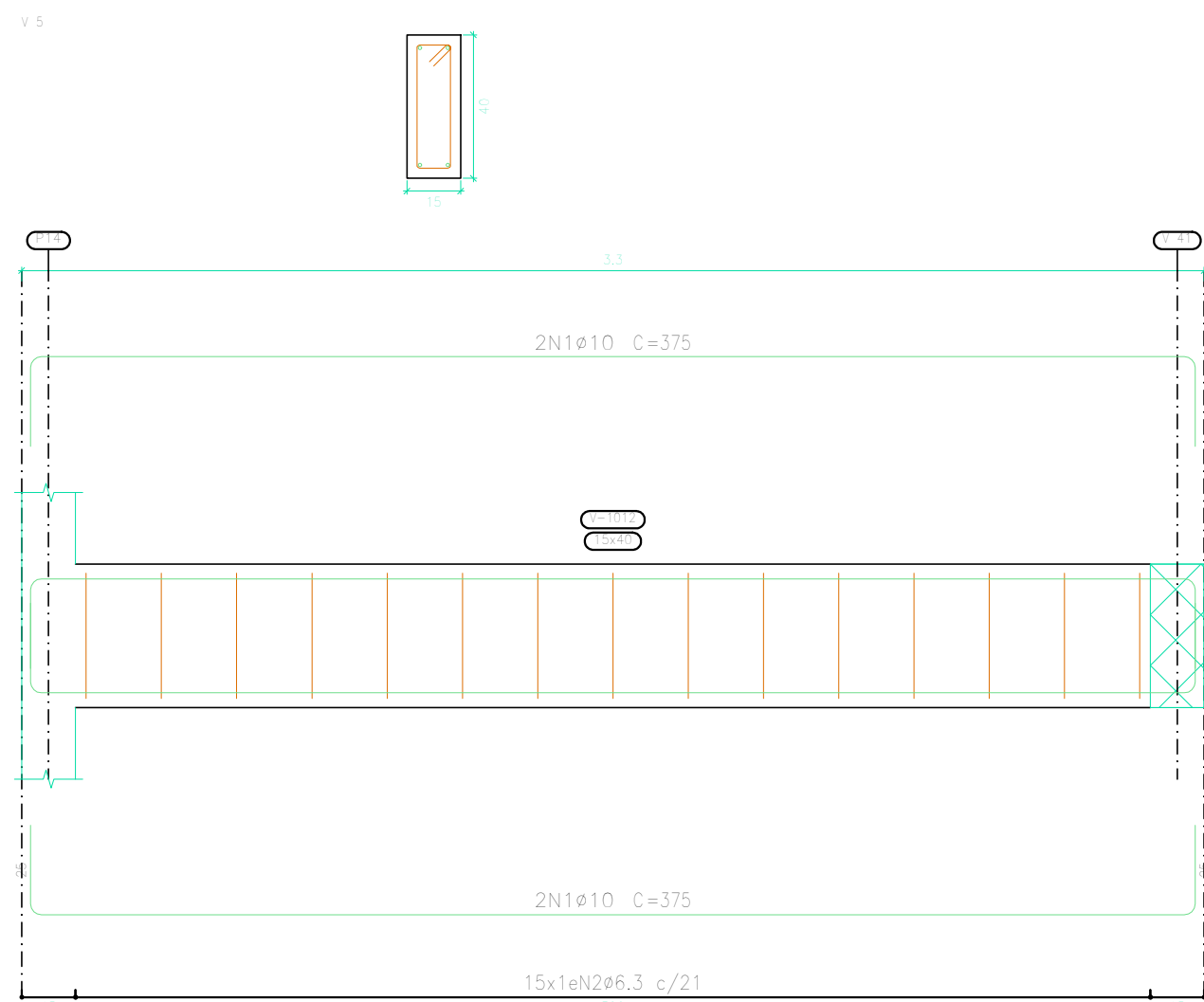
Elemento	Pos.	Diam.	Q.	Esquema (cm)	Comp. (cm)	Totol (cm)	CA-50 (kg)	CA-60 (kg)
V.2	1	ø10	4		575	2300	14.2	
	2	ø6.3	25		100	2500	0.6	
					Totol	12.8		
					ø6.3:	0.6	0.0	
					ø10:	14.2	0.0	
					Totol:	15.8	0.0	



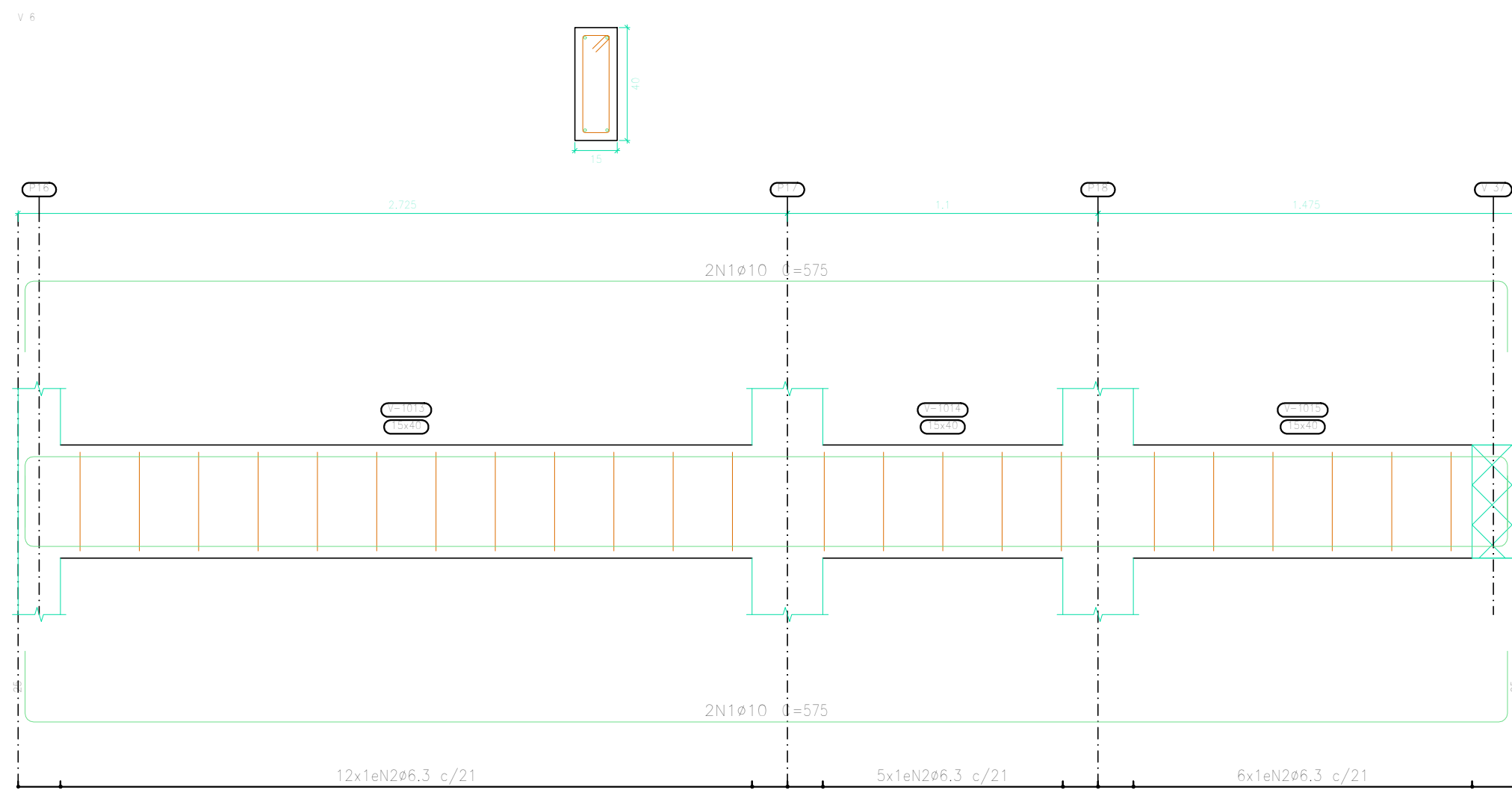
Elemento	Pos.	Diam.	Q.	Esquema (cm)	Comp. (cm)	Totol (cm)	CA-50 (kg)	CA-60 (kg)
V.3	1	ø10	4		375	1500	9.2	
	2	ø6.3	14		100	1400	0.4	
					Totol	10.6		
					ø6.3:	0.4	0.0	
					ø10:	9.2	0.0	
					Totol:	12.6	0.0	



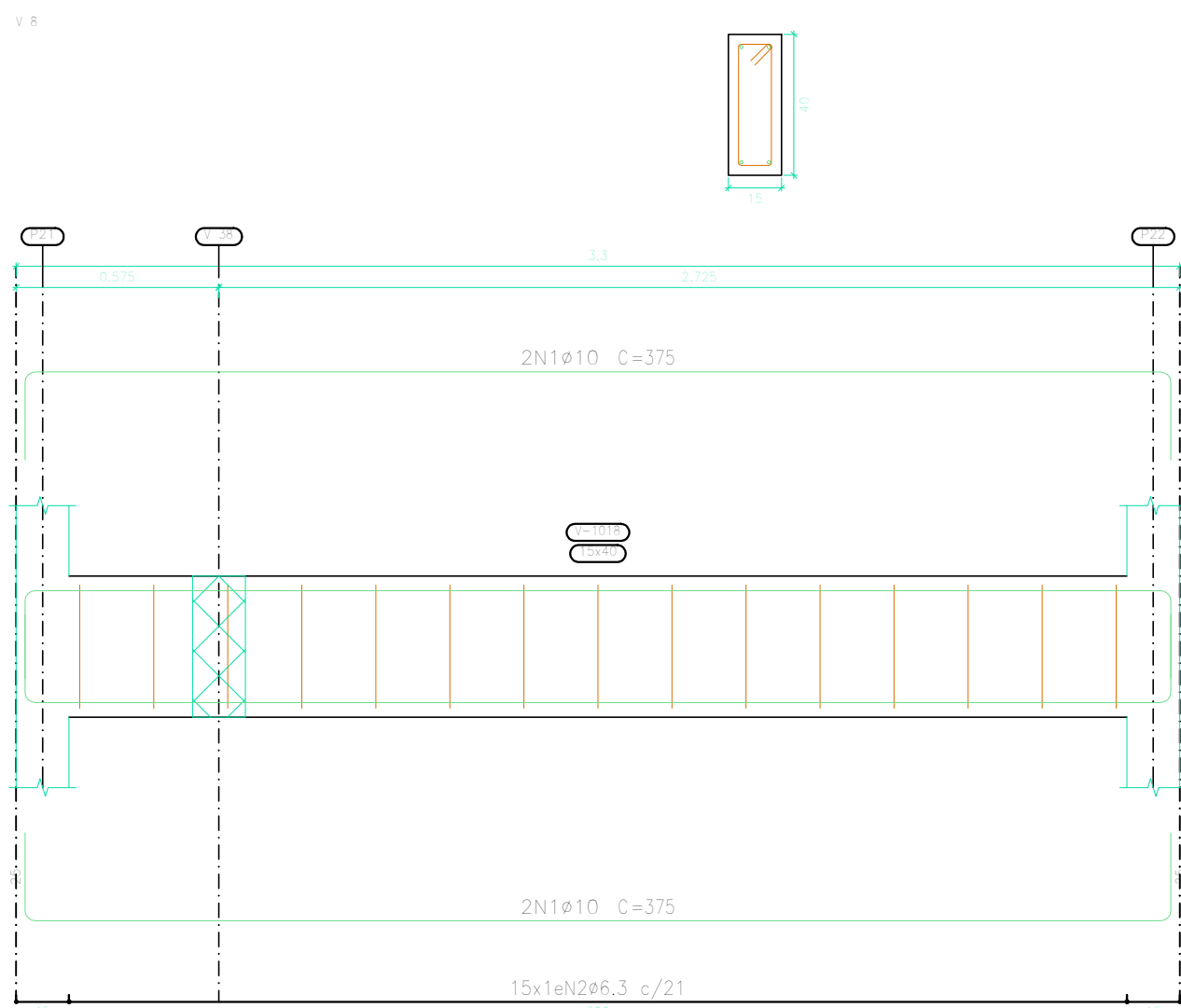
Elemento	Pos.	Diam.	Q.	Esquema (cm)	Comp. (cm)	Totol (cm)	CA-50 (kg)	CA-60 (kg)
V.4	1	ø10	4		100	160	1.0	
	2	ø10	4		940	3760	23.2	
	3	ø10	4		230	230	1.8	
	4	ø6.3	40		100	4000	0.8	
					Totol	35.8		
					ø6.3:	0.8	0.0	
					ø10:	28.0	0.0	
					Totol:	30.8	0.0	



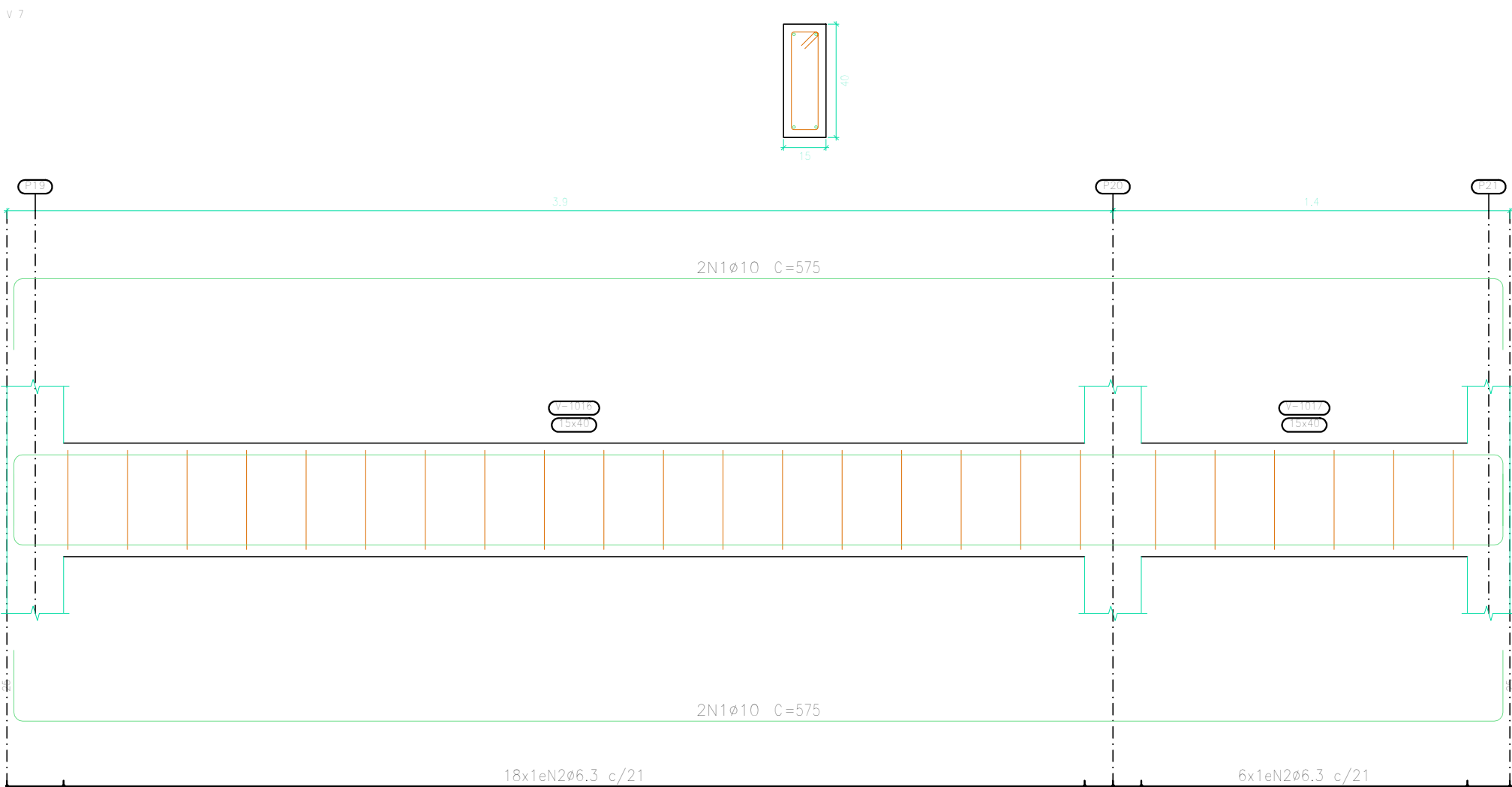
Elemento	Pos.	Diam.	Q.	Esquema (cm)	Comp. (cm)	Totol (cm)	CA-50 (kg)	CA-60 (kg)
V.5	1	ø10	4		375	1500	9.2	
	2	ø6.3	15		100	1500	0.7	
					Totol	12.9		
					ø6.3:	0.7	0.0	
					ø10:	9.2	0.0	
					Totol:	12.9	0.0	



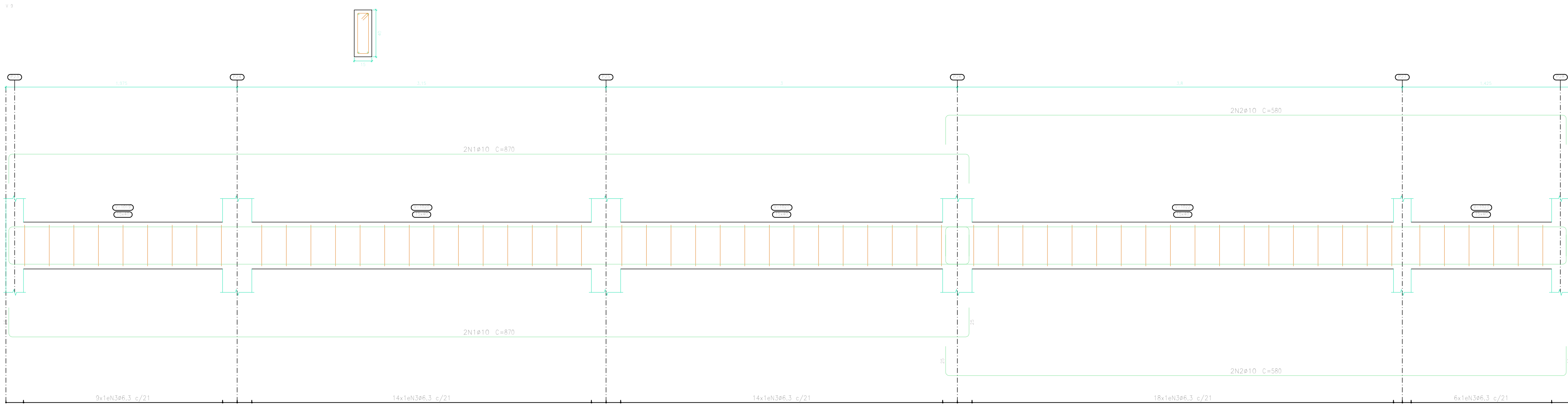
Elemento	Pos.	Diam.	Q.	Esquema (cm)	Comp. (cm)	Totol (cm)	CA-50 (kg)	CA-60 (kg)
V.6	1	ø10	4		375	2300	14.2	
	2	ø6.3	25		100	2500	0.6	
					Totol	19.8		
					ø6.3:	0.6	0.0	
					ø10:	14.2	0.0	
					Totol:	19.8	0.0	



Elemento	Pos.	Diam.	Q.	Esquema (cm)	Comp. (cm)	Totol (cm)	CA-50 (kg)	CA-60 (kg)
V.8	1	ø10	4		375	1500	9.2	
	2	ø6.3	15		100	1500	0.7	
					Totol	12.9		
					ø6.3:	0.7	0.0	
					ø10:	9.2	0.0	
					Totol:	12.9	0.0	



Elemento	Pos.	Diam.	Q.	Esquema (cm)	Comp. (cm)	Totol (cm)	CA-50 (kg)	CA-60 (kg)
V.7	1	ø10	4		575	2300	14.2	
	2	ø6.3	24		100	2400	0.9	
					Totol	20.1		
					ø6.3:	0.9	0.0	
					ø10:	14.2	0.0	
					Totol:	20.1	0.0	



Elemento	Pos.	Diam.	Q.	Esquema (cm)	Comp. (cm)	Totol (cm)	CA-50 (kg)	CA-60 (kg)
V.9	1	ø10	4		870	3480	21.4	
	2	ø10	4		580	2320	14.3	
	3	ø6.3	61		100	6100	14.9	
					Totol	50.6		
					ø6.3:	14.9	0.0	
					ø10:	35.7	0.0	
					Totol:	50.6	0.0	

TERNEO
Desenho de vigas
Concreto: C25, em geral
Aço das barras: CA-50 e CA-60
Aço das estribos: CA-50 e CA-60
Escala vigas 1:20
Escala seções 1:20
Escala aberturas 1:20



NOVA FRIBURGO
PREFEITURA

SECRETARIA DE OBRAS

CONSTRUÇÃO - UBS RUI SANGLARD

ASSUNTO: PROJETO BÁSICO DE ESTRUTURAS DA EDIFICAÇÃO

PLANTA: DESENHO DE VIGAS

SECRETÁRIO DE OBRAS: Bernardo Coelho Verly - Matrícula: 62.009

SUBSECRETÁRIO DE PROJETOS E: RESPONSÁVEL LEGAL: Luan Leite Feijó - Matrícula: 115.288 - CREA/RJ: 2013102356

DATA: FEV 2025 ESCALA: INDICADA REVISÃO: R00 PROPOSTO: A0 PRONCIA: 01/10

OBSERVAÇÕES: