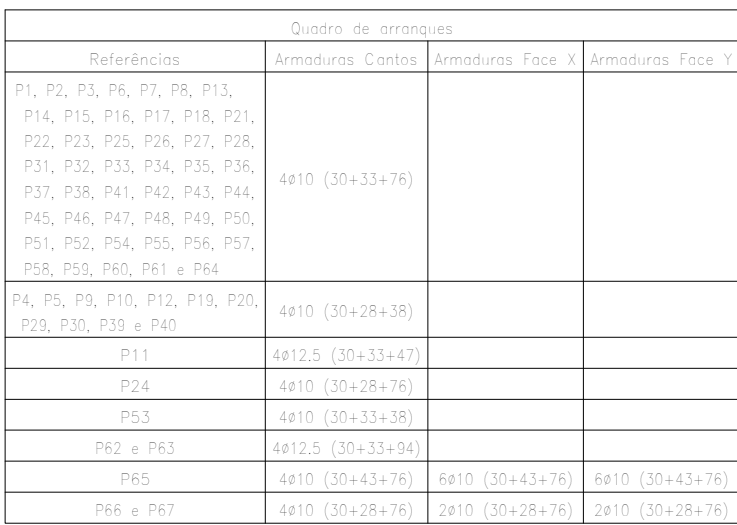


[illegible]

Resumo Aço Piso do Térreo Detalhamento da estaca	Comp. total (m)	Peso (kg)	Total (kg)
CA-50 Ø10	4824,00	2976,2	2.976,2
Ø6,3	2.642,48	647,67	647,67
Total(kg)			3623,87

Elemento	Volume (m3)
Estaca com Ø 20cm	23,14

